

# Level of Equality

---

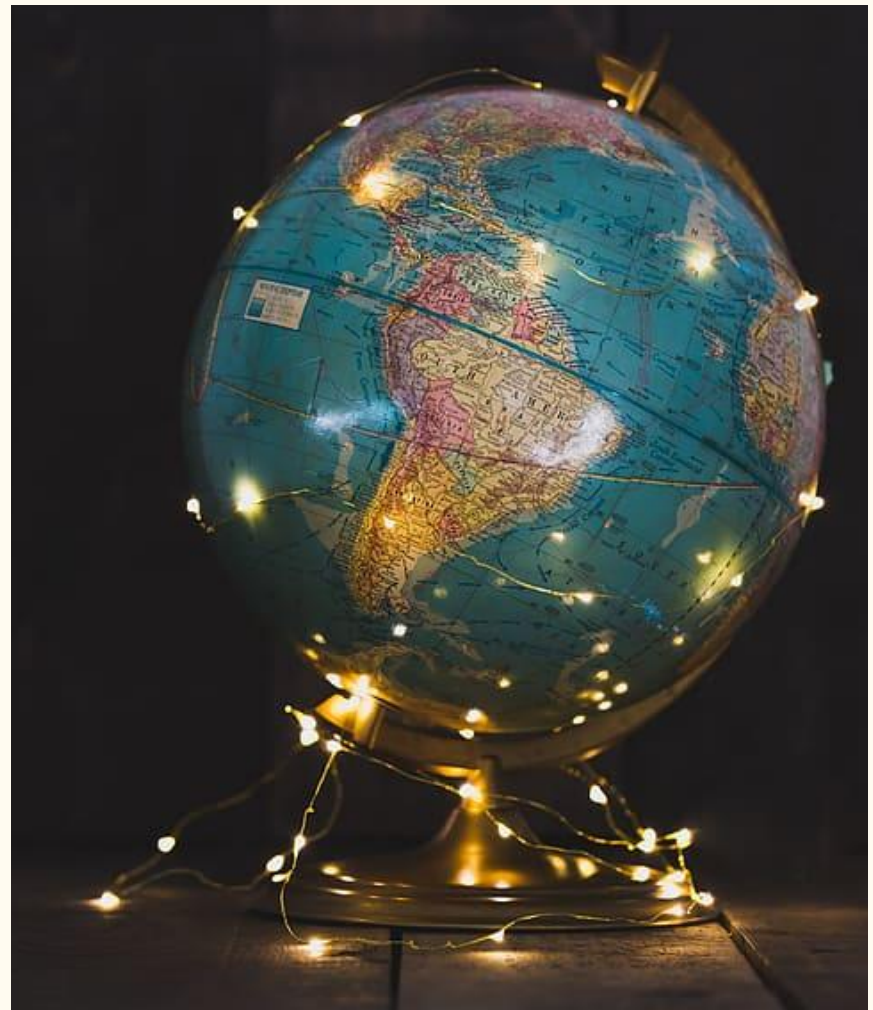
Portugal #124 - Elder Parminder

# **The Christ we are to Present to the World**

“Let every one who claims to believe that the Lord is soon coming, search the Scriptures as never before; for Satan is determined to try every device possible to keep souls in darkness, and blind the mind to the perils of the times in which we are living. Let every believer take up his Bible with earnest prayer, that he may be enlightened by the Holy Spirit as to what is truth, that he may know more of God and of Jesus Christ whom He has sent. Search for the truth as for hidden treasures, and disappoint the enemy.

The time of test is just upon us, for the loud cry of the third angel has already begun in the revelation of the righteousness of Christ, the sin-pardoning Redeemer. This is the beginning of the light of the angel whose glory shall fill the whole earth. For it is the work of every one to whom the message of warning has come, to lift up Jesus, to present Him to the world as revealed in types, as shadowed in symbols, as manifested in the revelations of the prophets, as unveiled in the lessons given to His disciples and in the wonderful miracles wrought for the sons of men. Search the Scriptures; for they are they that testify of Him.” 1SM 362.4

How are we to present  
Christ to the World?



# Presenting Christ to the World

The Christ we are to represent to the world is not only the Christ that is found in the four gospels.

There is more to share with the world than just the first advent Christ.

The Bible tells us Christ was tempted in all points as we are. How do we understand this to be the case when considering the 5 main relationship humans have with one another?

# Humans have 5 Main Relationships

- 1) Parent / Child
- 2) Brother / Sister
- 3) Husband / Wife
- 4) Master / Servant
- 5) Friend



# Questions?

How does Jesus know the pain and sorrows  
of a wife or a mother?

How is He to understand the temptations  
of a husband when he never had that role?



# Can Christ be Found Outside of the Gospels?

**Of course He can!**

**We can go to the other 62 books of the Bible.**

**When we do this we can see those relationship stories are a reflection of our relationship with God. We can place Christ in each one of those 5 relationships because He's revealed in types and shadows/symbols.**

**He's also revealed in the revelations of the prophets such as Daniel and Revelation.**



# Seeing the Mind of God

If we want to see the mind of God, what do we need to look at?



# HUMANS

We need to look at the minds of human beings.

When we see how human beings react and how they behave, then we can begin to understand God's mind.

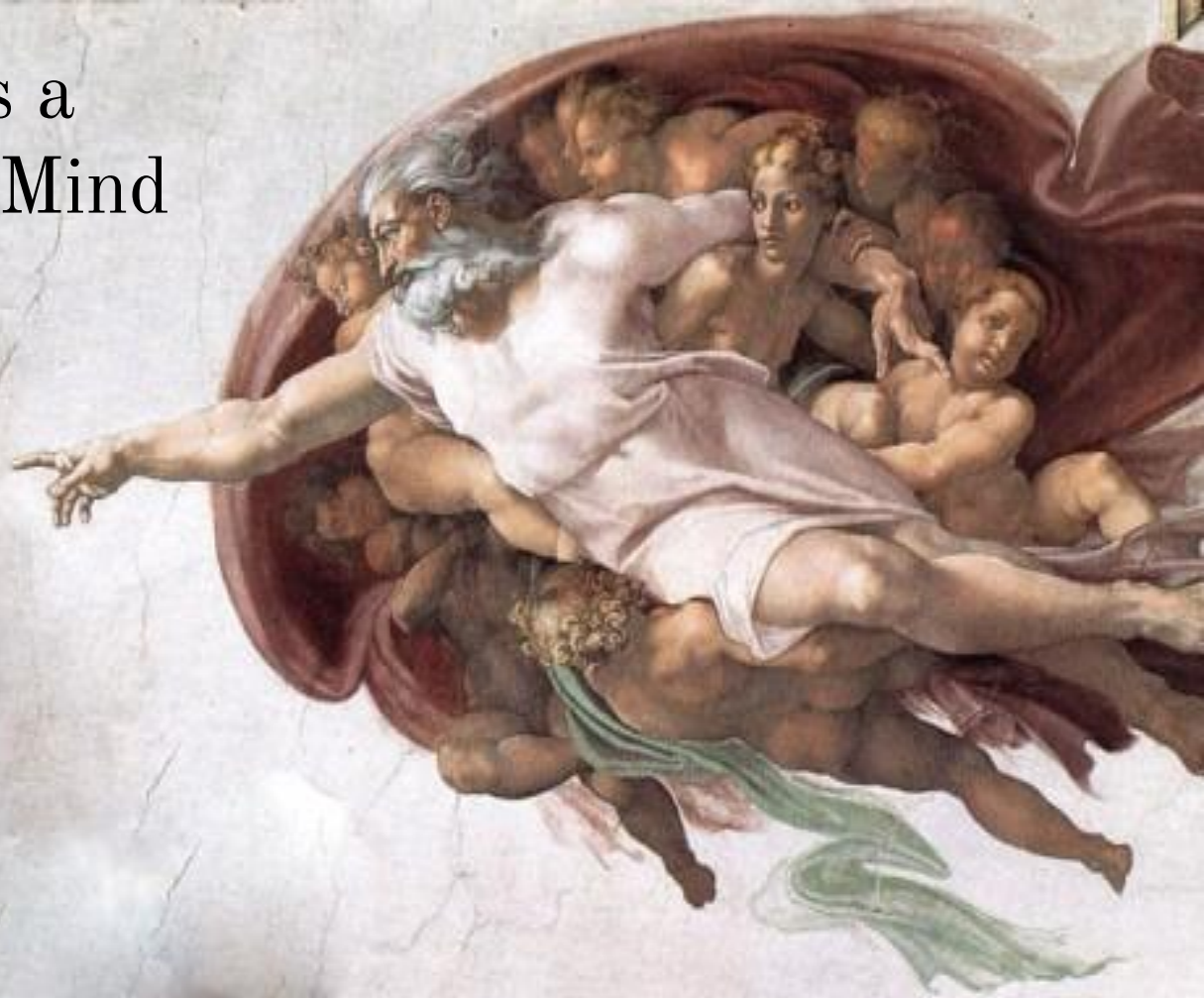
So was Christ a husband?

Yes.

Example - Boaz is a symbol of Christ as the husband of Ruth, he redeems her as heiress.



# The Human Mind is a Reflection of God's Mind



## **We are God's Counterpart**

“It was a wonderful thing for God to create man, to make mind. The glory of God is to be revealed in the creation of man in God's image, and in his redemption. **One soul is of more value than a world. God created man that every faculty might be the faculty of the divine mind.**

The Lord Jesus Christ is the author of our being, and he is also the author of our redemption, and everyone who will enter the kingdom of God will develop a character that is the counterpart of the character of God. **None can dwell with God in the holy heaven but those who bear his likeness.** Those who are to be redeemed are to be overcomers; they are to be elevated, pure, one with Christ.”

# What is the difference between a sinless mind and a sinful mind?

There is actually very little difference between a sinless mind and a sinful mind.

The only difference between them is the role that each of these faculties play.

Therefore in actuality there is no difference except that the sinless mind has balance while the sinful mind is imbalanced.

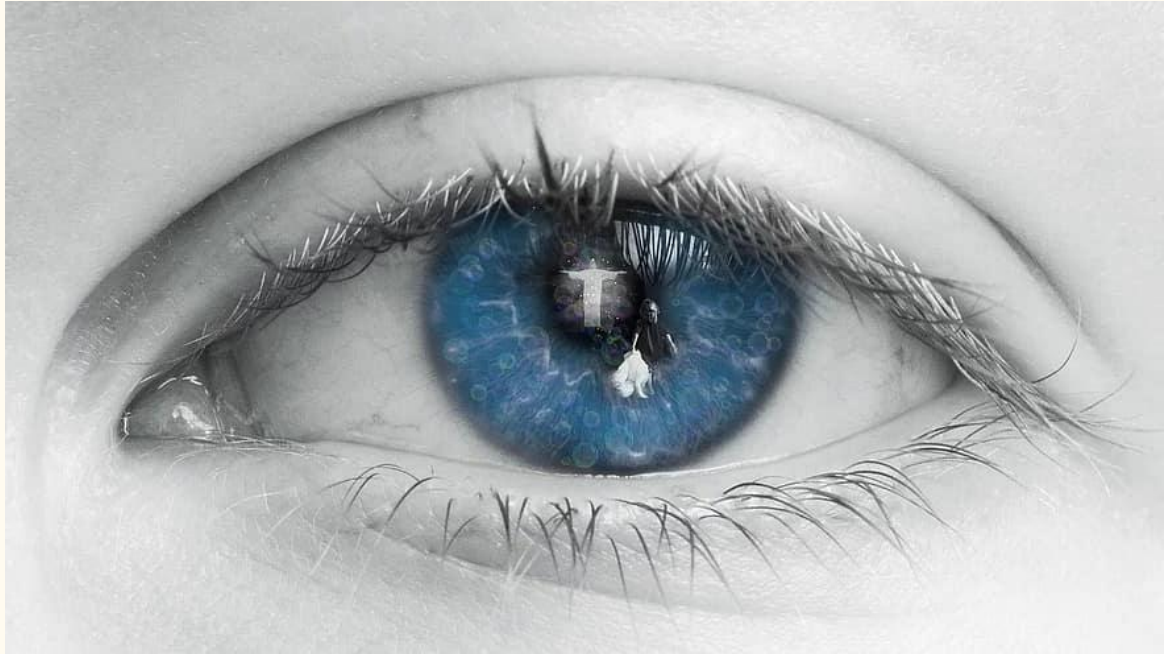


# Image of God

God created man so that every part of his being (every emotion, every feeling, and every higher power) would just be a reflection of God's mind.

So our minds are a direct copy of God's mind.

When mankind fell nothing was taken away and nothing was created.



Is passion (lust) superior to reason?

Which should win?





# What should be the balance between knowledge and a feeling?

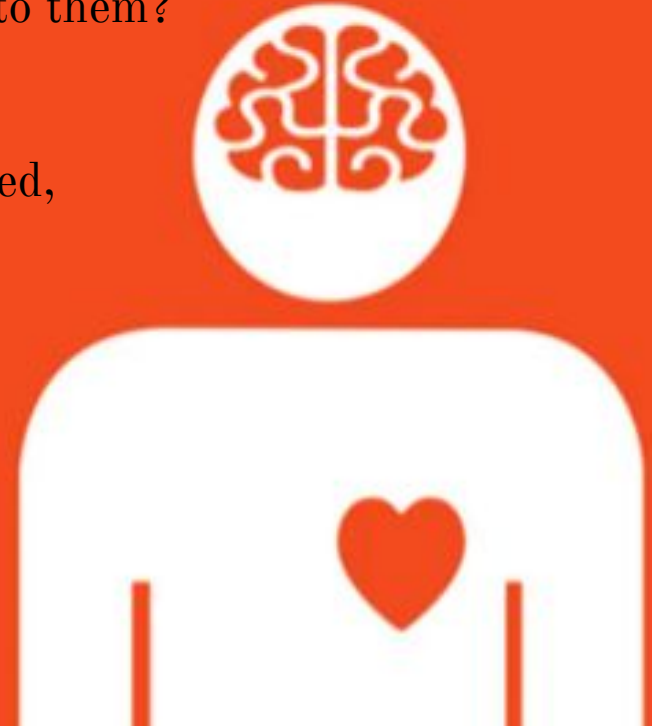
If someone says, I have a bad feeling what do you say to them?  
Just use your knowledge.

The problem comes when these roles become unbalanced,  
when they aren't fulfilling their proper role.

Remember nothing is created and nothing is taken  
away.

We don't all of a sudden become passionate, angry,  
or jealous etc.

All of these human emotions were already there.  
Nothing was added to the human mind and nothing  
was taken away.



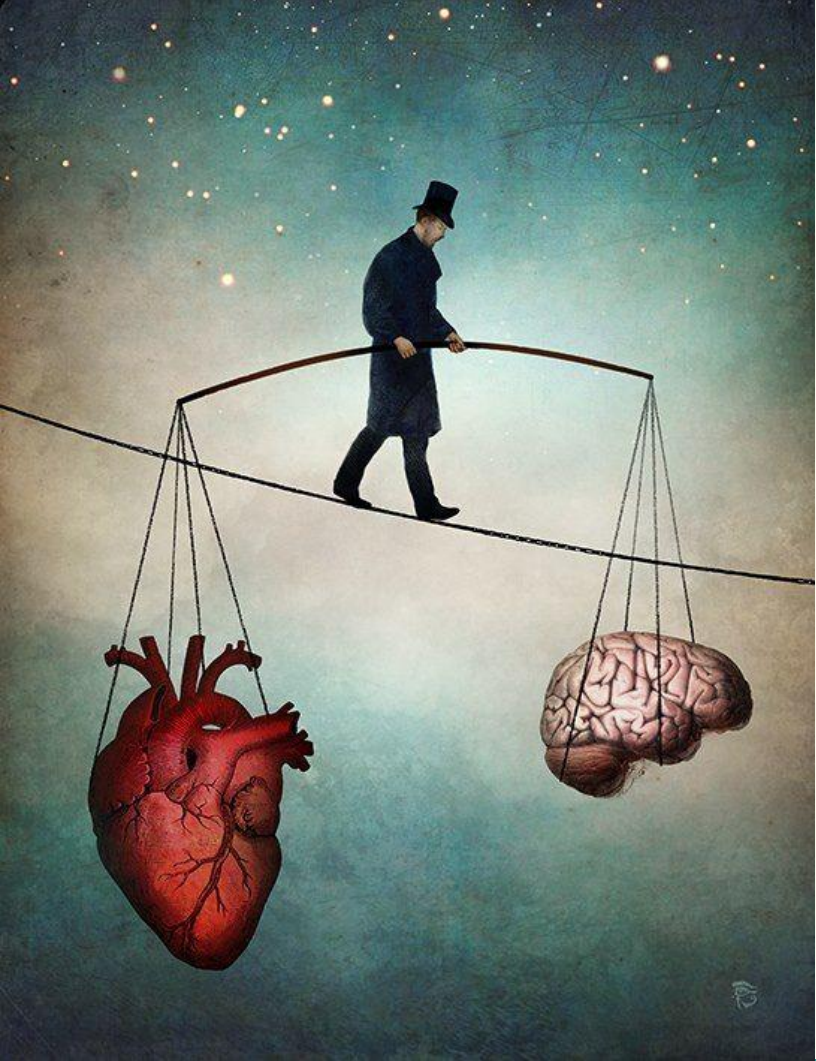
# Ellen White Simplifies Things

How does Ellen White categories all of our emotions? What does she say they are?

She collectively calls them our lower powers.

What does she put into the realm of the higher powers?

Intellect - Reason - Will

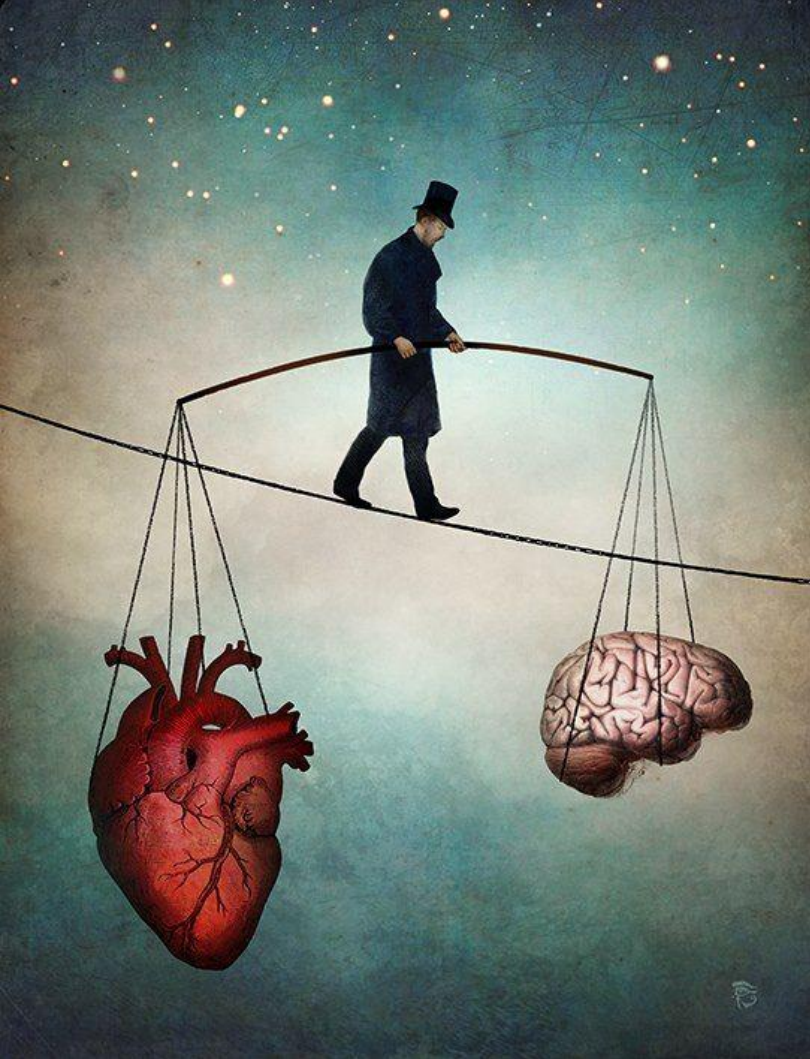


# Sinless Nature

People struggle to understand how Christ has a sinful nature and yet we are required to be sinless.

The reason we struggle with this is because many of us have an incorrect understanding of Christ's nature as well as human nature.

Sinless nature is all the faculties that we currently have but they are in the correct balance.



# Balance

Christ was balanced and this balance made Him sinless.

We are offered this as well.

We can also have a sinless nature while occupying a sinful (damaged) body.

All of our powers are a reflection of God's power.

# What must we have in order to enter heaven?

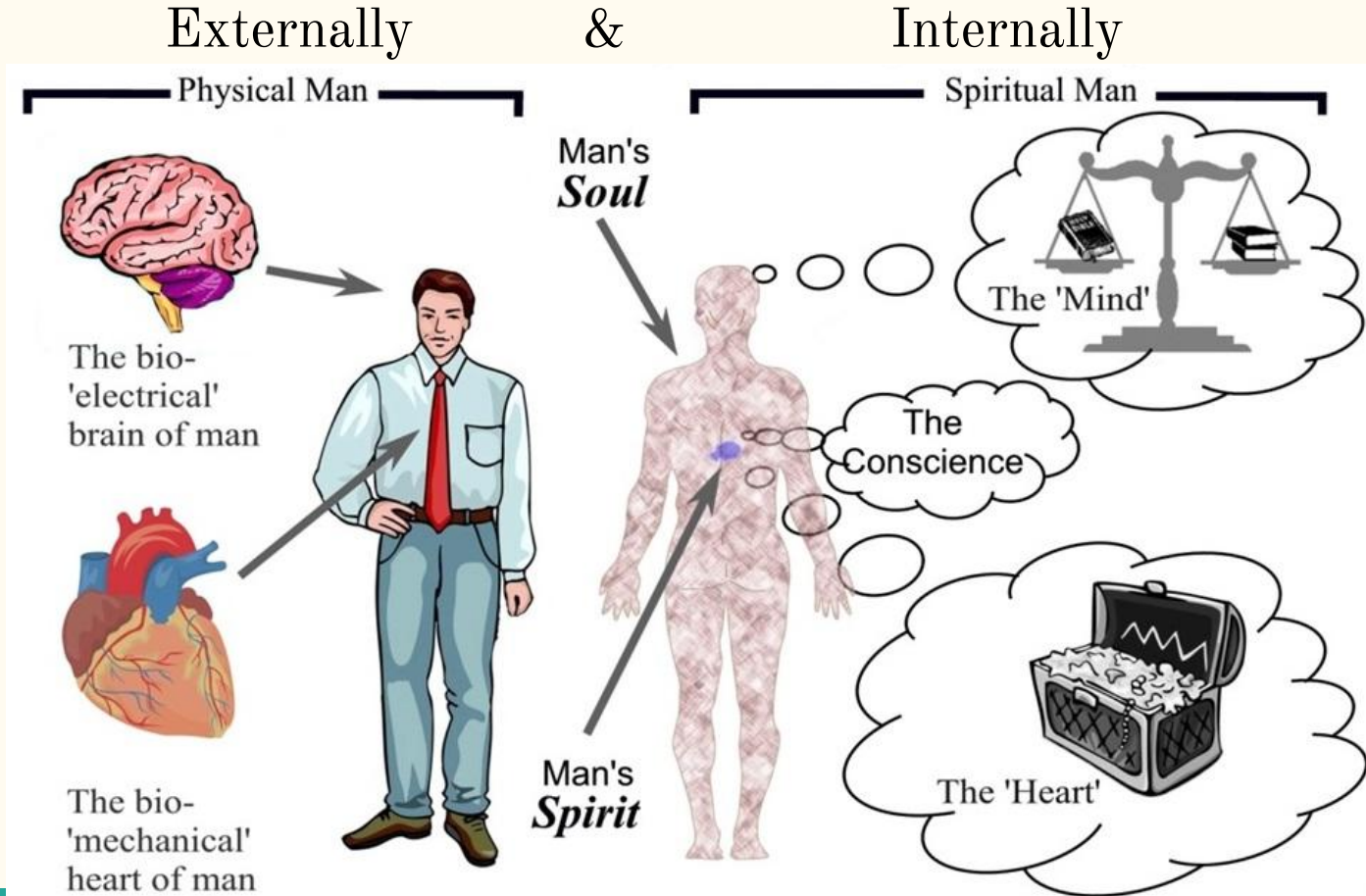
We must bear God's likeness.

How do we bear His likeness?

We must look like Him. This is the only way we will be able to enter the kingdom of heaven.



# What are the two ways in which we look like God?



# Externally

1 Cor 15:44-45 “It is sown a natural body; it is raised a spiritual body. There is a natural body, and there is a spiritual body. And so it is written, The first man Adam was made a living soul; the last Adam was made a quickening spirit.”

Who has control over our external image?

God alone!

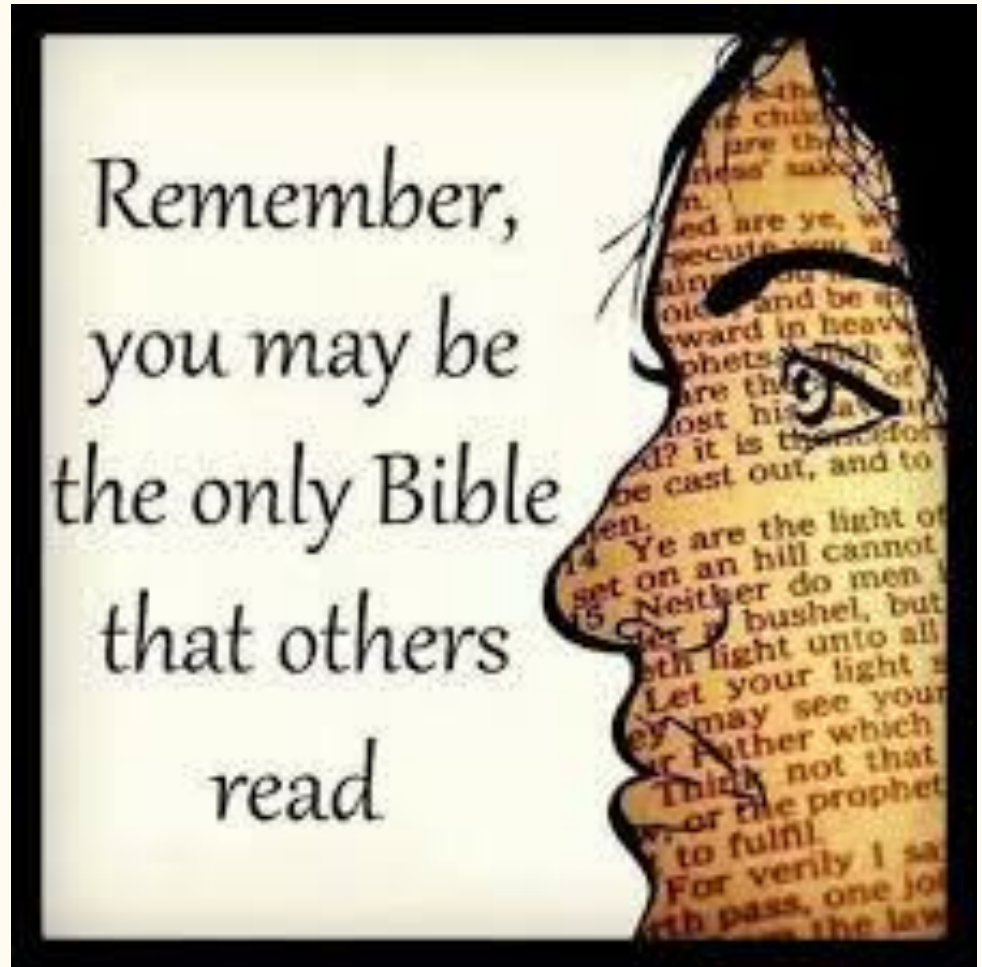
We have no control over this part.

So the bearing of his likeness in the context of the quote we read is not referring to the physical but rather the spiritual, the mind.



# Internally

The bearing of His likeness is our internal thoughts and feelings - the emotional part of our being.





# Character

None of us can get to heaven until we develop a character that is a duplicate of God's character.

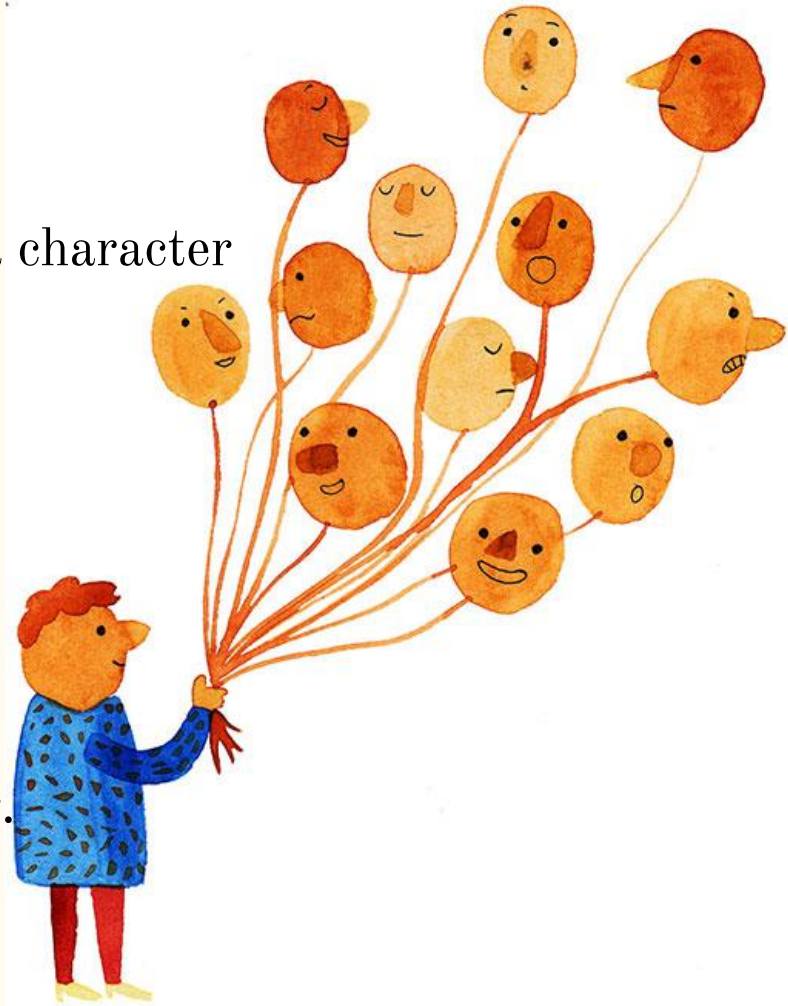
What is a synonym of character?

The Mind

It is our thoughts and feelings.

It is NOT our intelligence, not our knowledge.

It's really about the emotional part of our being.



# Being Respectful

Everyone knows when you talk to someone you should be respectful.

What does that look like?

We shouldn't shout or raise our voices.

Everyone knows this, so why do we continue to do it? Why do we do what we know is wrong?

Why do we eat things we shouldn't eat?

Because we feel like it:(

# Sinful Nature

If you upset me, I'll speak rudely to you.

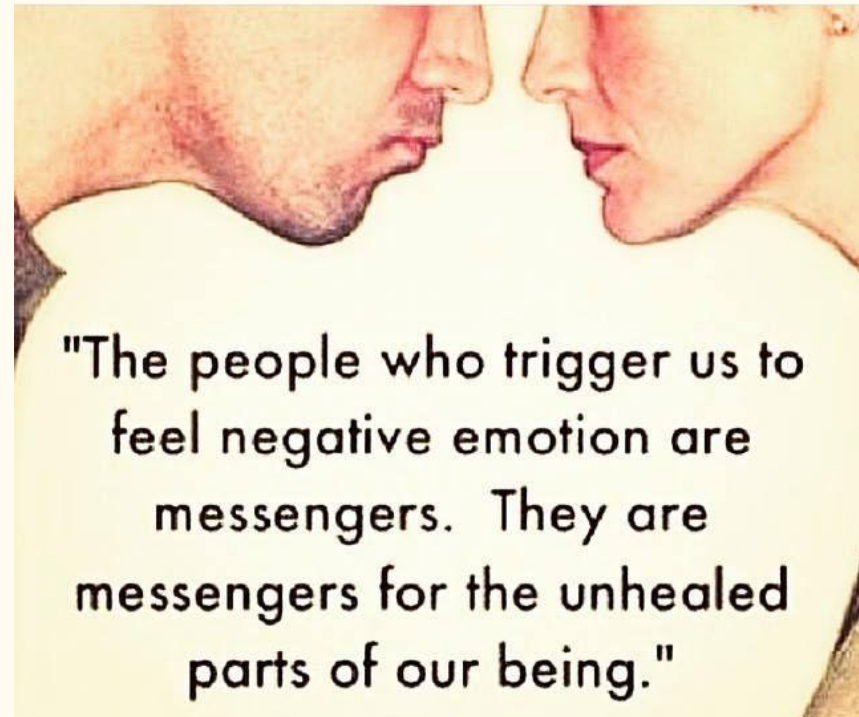
Why?

It's an emotional response.

This is what sinful nature is.

Your higher powers says, "It's wrong to do this."

But your lower powers says, "I don't care." I want to hurt the person because I want them to feel my pain.



This is what it means to bear His likeness.

We must develop a mind that does not behave like that.

How do you think that's going to happen? How are you going to develop this mind?

# What is the Wrong Way of Thinking?

Sit at home.

Isolate from the world.

Eat a vegan meal.

Pray a lot.

Then you can develop the  
mind of God.



# Society

We know it doesn't work like that.

We have to be in society.

It has to touch you.

We must be effected by all the things that are going on around us.

Why?

Because what goes on around you will impact you, it will influence you.

# We have messed up!

What were the issues from 1989 to 2019?

How have we messed up?

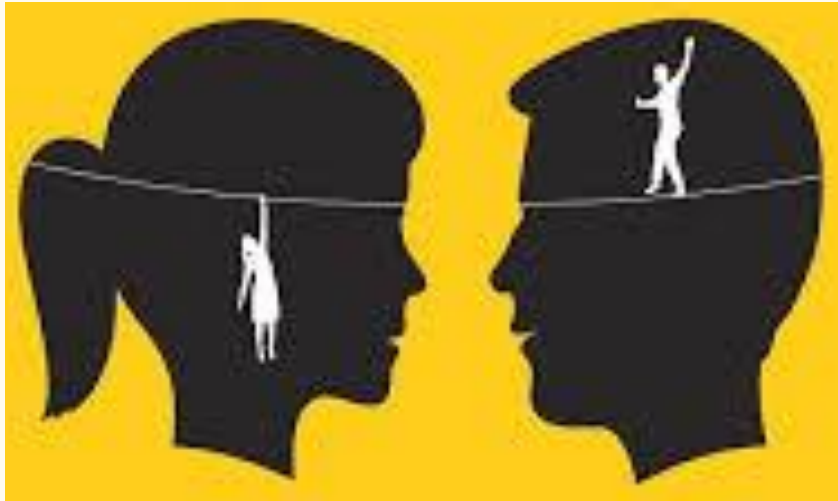
We were on the wrong side at every major waymark.

What side was that?

The Conservative American side.

We thought that the Republicans were just as bad as the Democrats.

# Seeing the World Wrongly



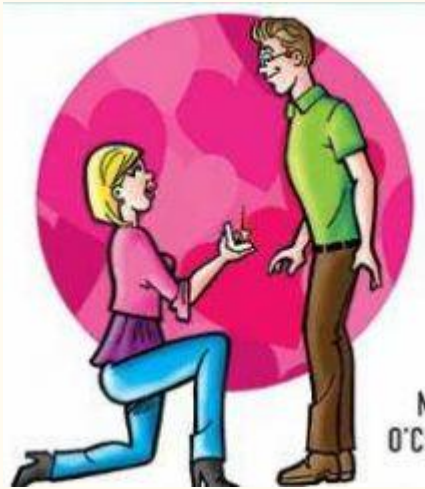
The moral majority mindset has not only shaped our thinking but it's made us see the world in a wrong way.

It also taught us to view our relationships with one another in a wrong way.



# Restoration of Marriage

At its basic level the restoration of the marriage institute is equality.



# Recap

We need to develop thoughts and feelings identical to God's.

They need to not only be in balance but also correct.

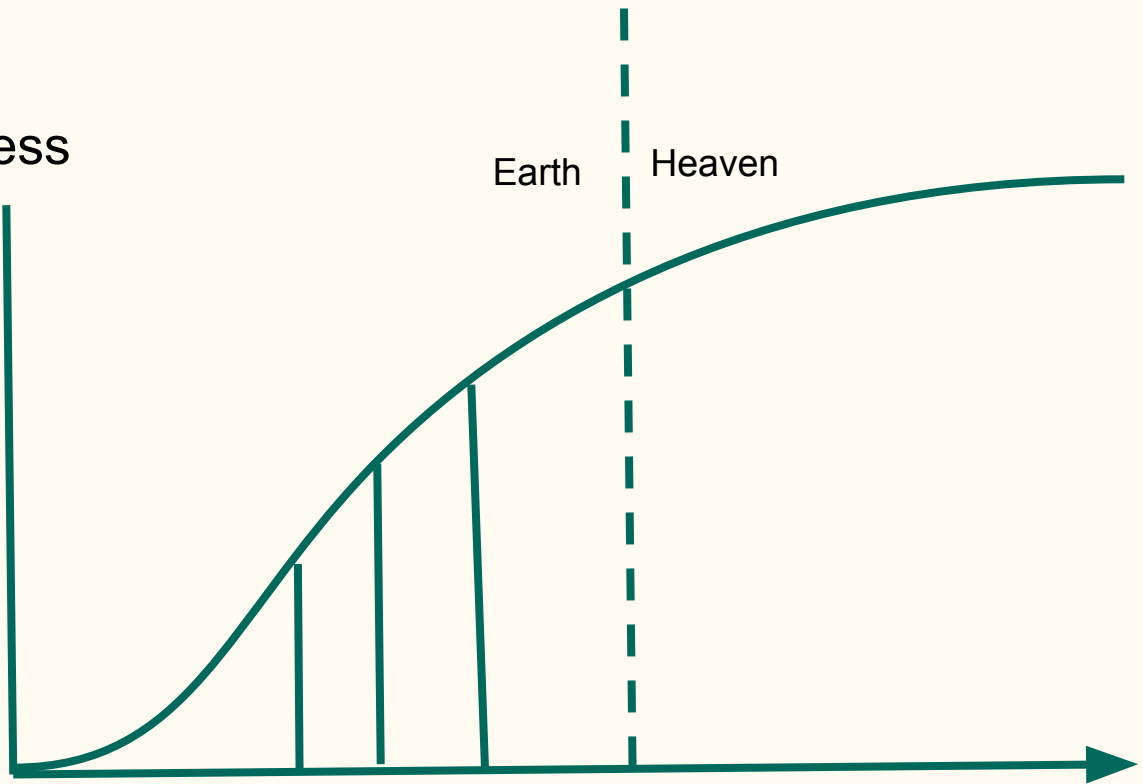
Only those who look like God will enter heaven.

# Bearing of God's Character Changes.

The relationships were not fully fixed in the earlier years 1860's and 1880's  
- racism and sexism.

The bearing of God's character (likeness) and the development of character  
is relevant to the age in which you live.

Goodness



Earth

Heaven

1

2

3

2nd  
Advent

Time

- 1- 1860's
- 2- 1890's
- 3- 2020's

# Christ Delays In Mercy

“The long night of gloom is trying, but the morning is deferred in mercy, because if the Master should come so many would be found unready.”—Testimonies for the Church 2:194 (1868).

“Had Adventists after the great disappointment in 1844 held fast their faith and followed on unitedly in the opening providence of God, receiving the message of the third angel and in the power of the Holy Spirit proclaiming it to the world, they would have seen the salvation of God, the Lord would have wrought mightily with their efforts, the work would have been completed, and **Christ would have come ere this to receive His people to their reward....** It was not the will of God that the coming of Christ should be thus delayed...” LDE 37.5

# No Sin in Heaven

You should find NO comfort that there won't be any sin in heaven. Why?

People seem to think that it will be easy because you can't fail. What they seem to forget is that you're not allowed to fail on earth. You can't fail here and you can't fail there.

If you're not arriving at the place God wants you to be now than what makes you think you'll arrive to the ultimate place He wants you to be which is heaven.

We need to do our part and God will be faithful to do His. We won't gain more light until we've accepted the light we've already been given. We can't be failing the tests God is giving us. Moment by moment, discussion by discussion, fight after fight, whatever it is...we can't afford to be failing here or we may only ever experience life on this side of heaven.

GOODNESS



The work of redemption is a process. The same rules on earth are the same rules in heaven. We won't fail in heaven and we can't fail here or we won't get there. The longer we are alive the more perfect we shall reflect the image of God and this glorious process will continue throughout eternity.

The work on Earth continues in Heaven

Today 2020

2nd Advent

Eden

TIME